

Western Instruments Inc. Est. 1965

PROVIDING INNOVATIVE PRODUCTS AND SYSTEMS FOR THE TUBE AND PIPE INDUSTRY

Testing Systems, Associated Equipment and Services



Western Instruments, Inc.

Box 72, Site 2, R.R. #1
St. Albert, Alberta
Canada T8N 1M8

Phone: (780) 459-6720 Fax: (780) 459-7837
E-mail: westerninst@telusplanet.net

www.westerninstruments.com

Western Instruments Inc. Est. 1965

For over forty-two years Western Instruments, Inc. has created * and provided innovative products, systems and services for the Tube and Pipe Industry.

MILL LINE SYSTEMS

- **FLASH GAUGE*** - The inventors and originators of the Weld Area Contour with I.D. and O.D. displays. Located after flash cutting, while weld is hot!! – Since 1987
- **MILL LINE TESTING SYSTEMS** – After Flash Cutting – while the weld is hot or in the sizing section – Weld following. Remote monitoring. Remote control. Lamination options.
- **FIRST MULTI-CHANNEL ULTRASONIC TESTING SYSTEM***.
- **HIGH SPEED ULTRASONIC TESTING CAPABILITY*** - Over 100m/min.
- **WELDER AREA GROUNDING SYSTEM*** – this bleeds off induced current, to protect instrumentation and control systems. It protects bearings and rolls from arcing due to induced stray currents from seam heating and welding.
- **PRE-WELD EDGE CLEANING SYSTEMS*** – minimize defects due to entrapped scale.
- **SMALL DIAMETER THIN WALL TESTING*** to 0.025" (0.75mm) wall thickness and 1" (25mm) diameter. Do what normally is done in an immersion tank, but on a production basis.
- **HEAVY WALL AND LOW WALL THICKNESS / DIAMETER RATIO.** Production Testing with no immersion tank.
- **ERW WELD TRACKING*** - buffed or painted pilot line.
- **STRIP LAMINATION TESTING SYSTEMS**
- **RETROFIT ULTRASONIC TESTING SYSTEMS** – To improve reliability of equipment supplied by others.
- **PIPE MILL PROBE***
- **NOISE (EMI) CONTROL***

FINISHING LINE ULTRASONIC TESTING

- Conveyor Line
- Overhead Beam
- Weld Area
- Weld and Lamination
- End Lamination
- Weld, Full Body / End Lamination
- Full body with cross roll straightening (saves plant space and handling equipment).
- Full body, stand alone.

SUBMERGED ARC WELDED PIPE

- Straight Seam (press or roll formed); Spiral Weld
- On-Line or Off-Line.
- Non Contact Weld Seam Follower*
- Toe Follower Gate*
- Combined Ultrasonic and Fluoroscopy*
- Plate Testing Systems

CONSULTING SERVICES

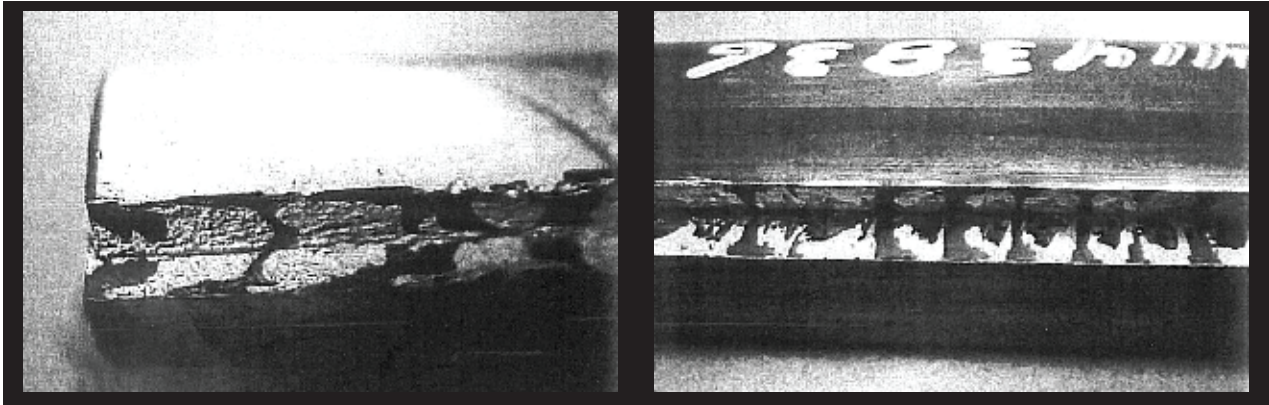
- Defect Catalog Development*
- Quality Control Systems
- Production Metallography Systems
- Standard Operating Procedures (SOP) Development
- Forming Troubleshooting* Canada Patent No. 654298
- Production Control Systems
- Induction Seam Heating to Normalizing Temperatures*
- Pit Type Looper Design*
- Strip Guidance*
- Edge Preparation
- Specifications
- Pipe Bending / Straightening Canada Patent No. 969458
- Improved Welder Contacts
- Plant Layout
- Service Failure Analysis

OTHER PRODUCTS

1. Pit gauge Product Series – 15 Models; www.pitgauge.com*
2. W-Series of Portable Magnetic Particle Equipment, 17 models of Yokes, 14 Models of Coils to 25"

***DENOTES ORIGINAL INVENTORS, DEVELOPERS.**

Oxidized Weld (Trapped Scale in Bond Plane)



Help avoid bad pipe
with proper testing.



UT Systems

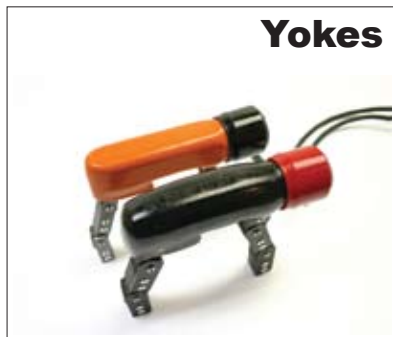
for Tube and Pipe



Pit Gauges



Yokes



Coils

